

Instructions for Relinking a MFHD

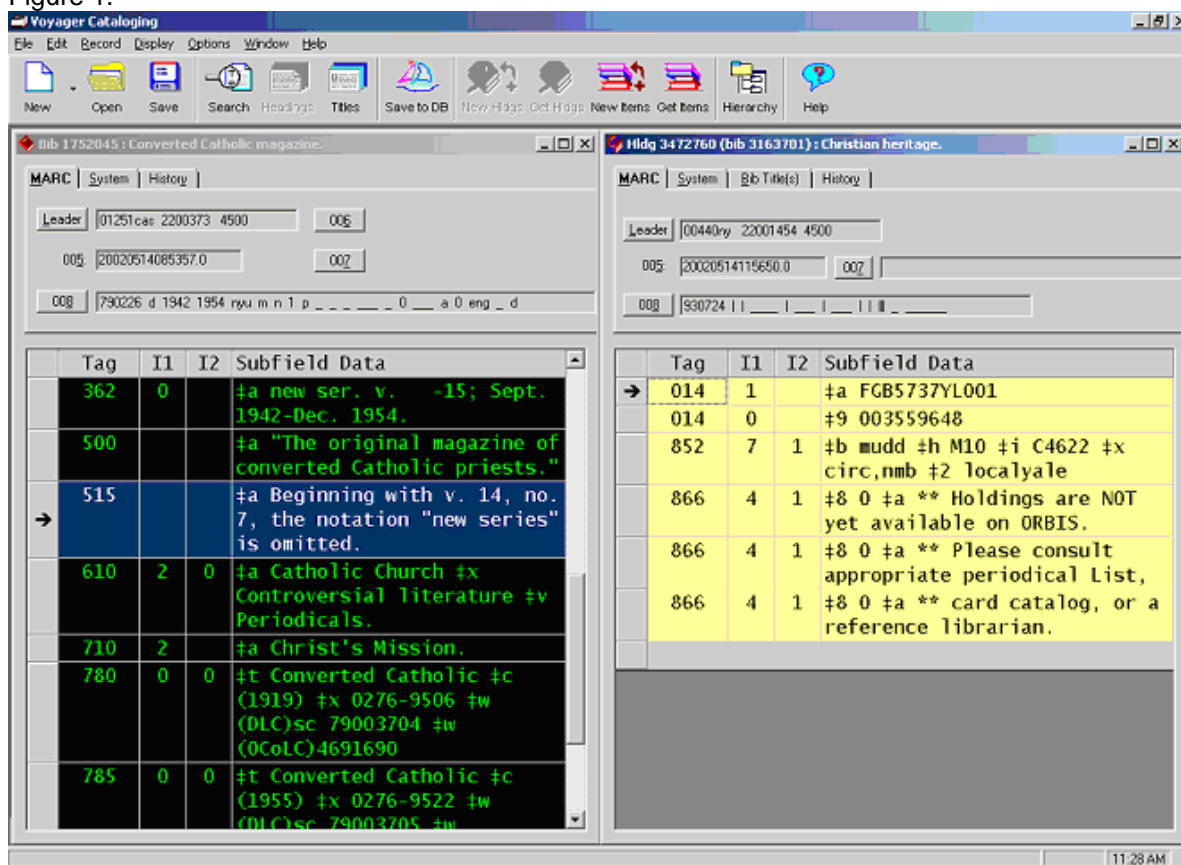
This procedure should be used instead of relinking when all the items from a provisional level record belong on one particular MFHD. It is particularly helpful when there are numerous items that must be moved. *However, if any of the items belong on a different MFHD do not use this procedure. Instead, follow the normal relinking procedure where each item is relinked individually.

Before using this procedure, confirm that the relink is appropriate.

1. Retrieve both the *full-level* record and the *provisional-level* record.

- Get holdings of the *provisional-level* record.
- Close the *provisional-level* bib record.
- Tile the records so that the *full-level* bib and *provisional-level* MFHD records are visible.
- Activate the *provisional-level* MFHD (see Figure 1).

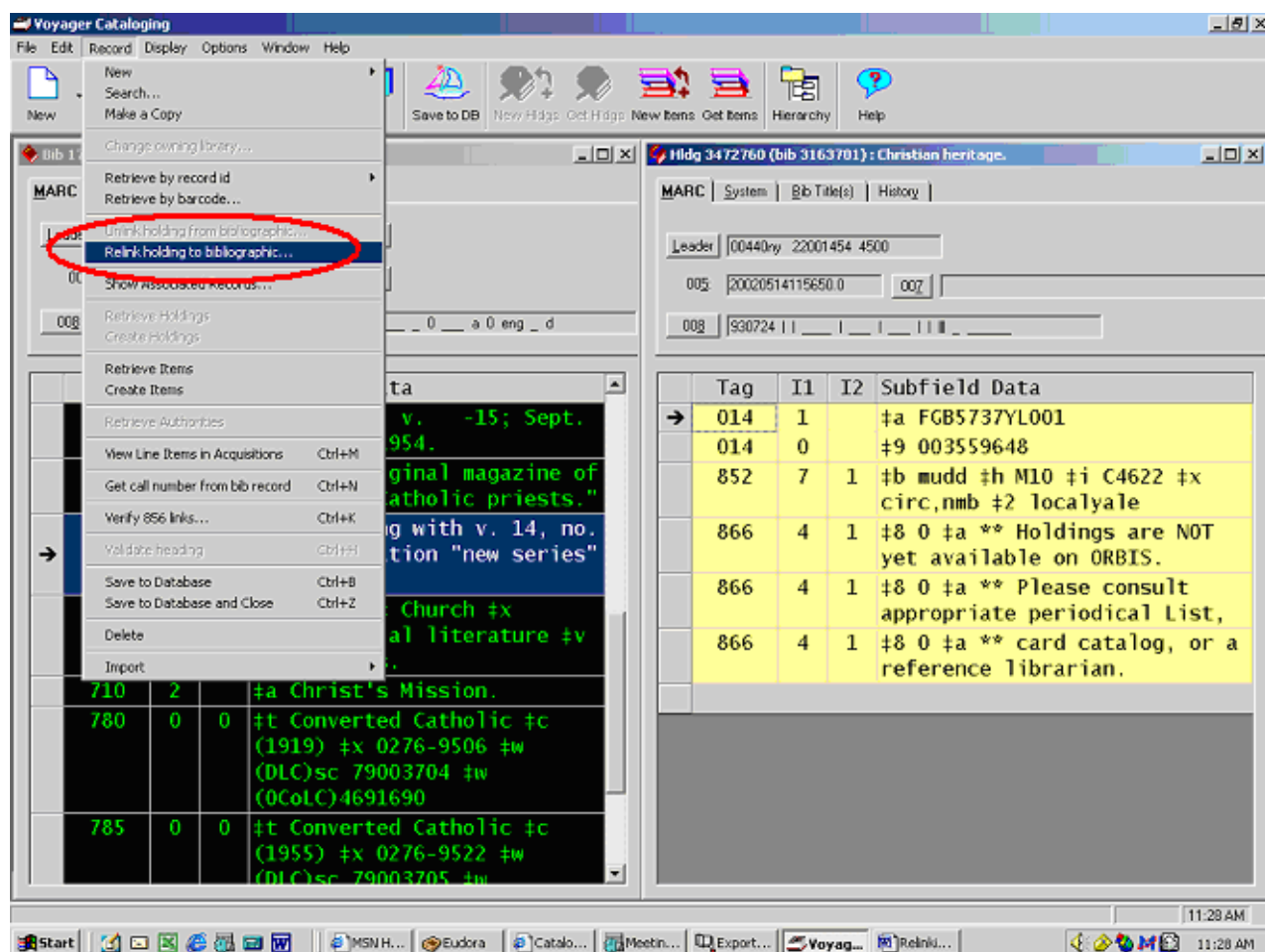
Figure 1.



- Select *Record* from the menu bar and scroll down to choose "Relink holding to bibliographic..." (see Figure 2).

Instructions for Relinking a MFHD

Published on Yale University Library (<https://web.library.yale.edu>)

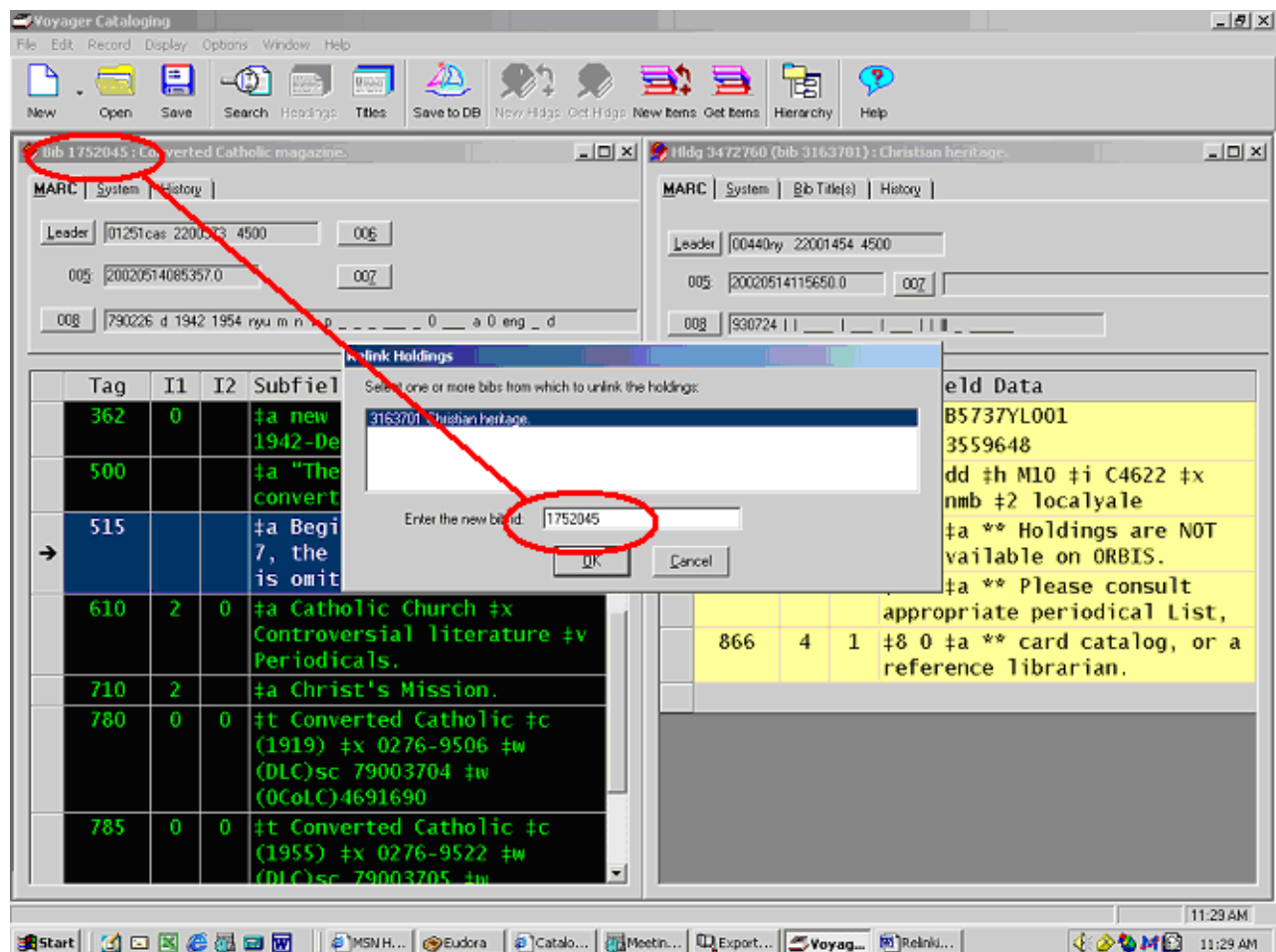


- Type the *full-level* BIB id in the "Relink Holdings" box. Double check that the id is correct, and then click OK (see Figure 3).

Figure 3.

Instructions for Relinking a MFHD

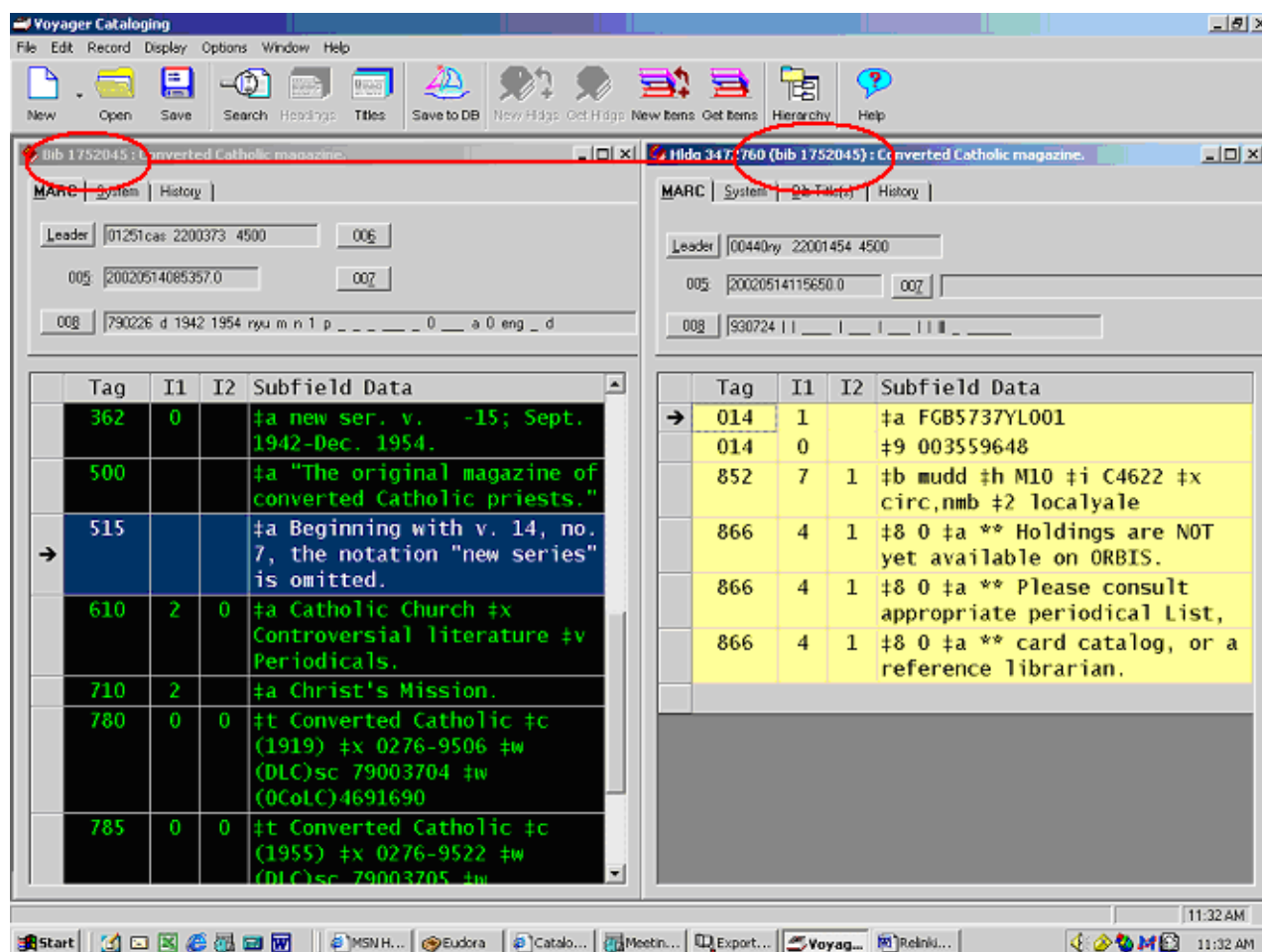
Published on Yale University Library (<https://web.library.yale.edu>)



- The bib id number on the MFHD bar should now match the number of the *full-level* bib record (see Figure 4).

Instructions for Relinking a MFHD

Published on Yale University Library (<https://web.library.yale.edu>)



The MFHD (with all of its items) is now attached to the *full-level* record.

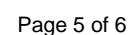
- Edit the holdings of the relinked MFHD as necessary.
- Make sure the second indicator in the 852 is a "1" (see Figure 5).
- Save to DB.

Figure 5.

Published on Yale University Library (<https://web.library.yale.edu>)



- Figure 8.



Instructions for Relinking a MFHD

Published on Yale University Library (<https://web.library.yale.edu>)

- **Select the MFHD without the items and click “retrieve.”** Once you have confirmed that this is the MFHD you want to delete, follow your normal procedures either to delete or suppress the MFHD, depending upon your permissions.
 - Retrieve the *provisional-level* BIB record by the old Orbis key on the flag. Delete (or suppress) this record so long as there are no other MFHDs attached.

Source URL: <https://web.library.yale.edu/cataloging/catman/relinking-mfhd-cmt>